

 **easySTREAM™**

Automated PCR assay setup system



POWERED BY
NucliSENtral™


BIOMÉRIEUX

PIONEERING DIAGNOSTICS

Improve standardization and laboratory workflow with easySTREAM[®], high-precision automated PCR setup system

Versatile - compact benchtop system

Easy to setup desk for multiple assays

Compatible with most PCR formats

Seamless integration with bioMérieux's molecular solution



Versatility

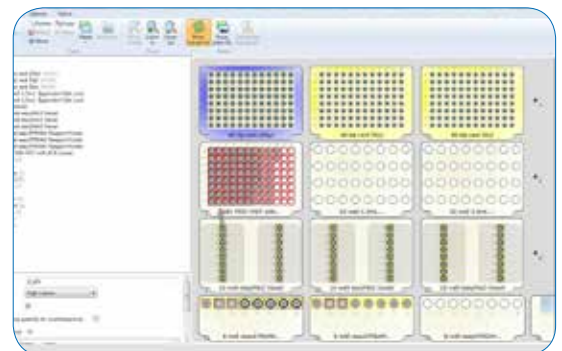
- ▶ Validated for use with NucliSENS[®] easyMAG[®] vessel and common eluate storage tubes
- ▶ Compatible with most PCR formats for output ¹
- ▶ Works with different Real-Time PCR assay types

Workflow improvement

- ▶ Set up **multiple PCR assays**:
 - Fully automates proven quantitative and qualitative ARGENE[®] Real-Time PCR kits
 - Opened to laboratory developed tests ²
- ▶ Rapid, **high-precision pipetting**:
 - 200 µL single pipetting head
 - Air-based pipetting (no fluidic)
 - Liquid Level Sensing (pressure-based)
 - Multi-dispensing
- ▶ **Improved safety**
- ▶ **Easy-to-use software**:
 - Design PCR plate row/column - Run templates
- ▶ **Data transfer ensured throughout the process** with bioMérieux's complete molecular workflow solution



Prepare your PCR directly from NucliSENS[®] easyMAG[®] vessel/the cartridge



Intuitive software mirrors deck layout for ease-of-use

¹ Depends on the PCR Real-Time system, please inquire.

² Under specific conditions.

Maximize your efficiency with bioMérieux's automated molecular solution from sample to result with seamless data flow



NucliSENtral® V2 software

Sample and Test request sent by LIS



Easy-to-use graphic interface to facilitate the creation of full easySTREAM® deck project



Full connectivity between all modules

- ▶ Ensures data transfer throughout the process from LIS, bioMérieux extraction and PCR assay setup systems to most common Real-time PCR systems
- ▶ Management of several systems with a single connexion to LIS
- ▶ Minimizes manual intervention to ensure result reliability

easySTREAM® SPECIFICATIONS

Instrument Footprint	Width = 600 mm Depth = 515 mm Height = 470 mm
Weight	45 Kg
Electrical requirements	100-240 VAC, 50/60 Hz, 60 watts
Noise Output in Decibels (dB)	42 dB(A)
Filtered Tips	96 racked filtered tips: 50 µl, 200 µl provided by bioMérieux
Computer (supplied)	Tower PC, Windows 7
Deck Capacity	9x microplates full positions and 3 reagent racks positions
Tip disposal	All used tips ejected externally – no waste accumulation on worktable
Connectivity	Connectivity with NucliSENtral® V2 (data transfer software)
Safety	Preinstalled HEPA (High Efficiency Particulate Air) filter Preinstalled UV lamp for workstation sterilization



bioMérieux S.A.
69280 Marcy l'Etoile
France
Tel. : +33 (0)4 78 87 20 00
Fax : +33 (0)4 78 87 20 90

www.biomerieux.com
www.biomerieux-diagnostics.com